



ANNUAL PUBLIC EXPOSE

**PT DIAN SWASTATIKA
SENTOSA TBK**

Tuesday, June 9, 2026

Agenda

- COMPANY OVERVIEW
- OPERATIONAL REVIEW 2025
- FINANCIAL REVIEW 2025
- BUSINESS STRATEGY
- CORPORATE GOVERNANCE



Agenda

- **COMPANY OVERVIEW**
- OPERATIONAL REVIEW 2025
- FINANCIAL REVIEW 2025
- BUSINESS STRATEGY
- CORPORATE GOVERNANCE



Company Overview

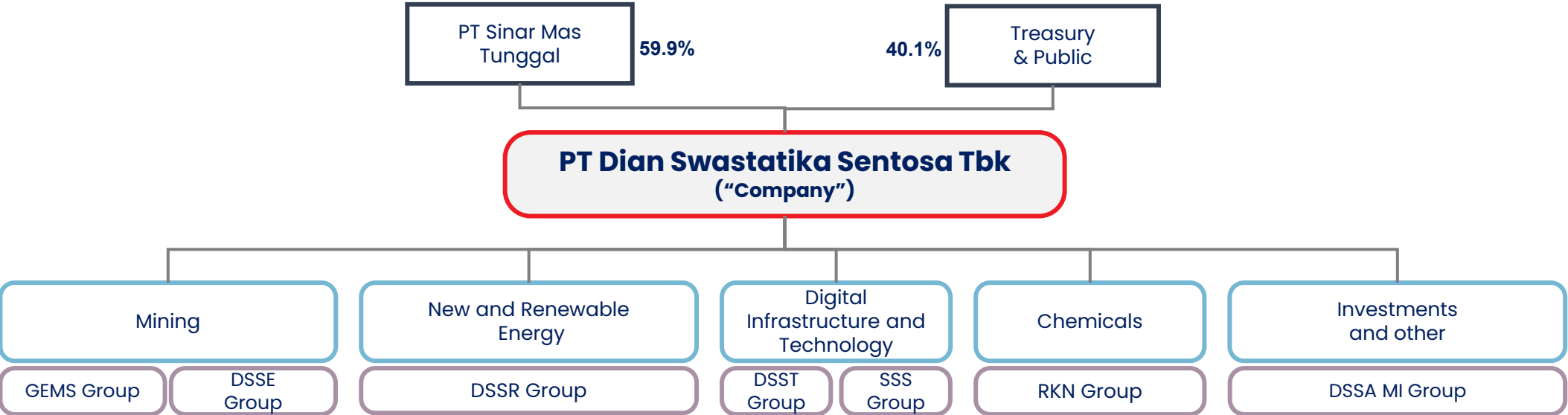
Business Activities



Product / Service

<p>Coal Mining</p>	<ul style="list-style-type: none"> • Geothermal Energy • Solar Energy 	<ul style="list-style-type: none"> • FTTH & Backbone • Data Center Services • AI Digital Solutions 	<ul style="list-style-type: none"> • Agrochemical (Fertilizer, Pesticide) • Chemical (General & Specialty) 	<p>Other Minority Investments</p>
 		    		

Corporate Structure (as of December 31, 2025)



Mining

GEMS : PT Golden Energy Mines Tbk
 DSSE : PT DSSE Energi Mas Utama

New and Renewable Energy

DSSR : PT Daya Sentosa Sakti Renewable

Digital Infrastructure and Technology

DSST : PT DSST Mas Gemilang
 SSS : PT Sinarmas Sukses Sejahtera

Chemicals

RKN : PT Rolimex Kimia Nusamas

Investments and other

DSSA MI : PT DSSA Mas Infrastruktur

Number of subsidiaries : **115** entities
 Number of employees : **2,016** persons

Agenda

- COMPANY OVERVIEW
- **OPERATIONAL REVIEW 2025**
- FINANCIAL REVIEW 2025
- BUSINESS STRATEGY
- CORPORATE GOVERNANCE





MINING

Main Site Locations

■ Mining Locations



Kepemilikan Efektif
Effective Ownership



Konsesi
Pertambangan
Mining Concessions





Meliputi Area Agregat
(kira-kira)
Covering an Aggregate
Area (approximately)



Cadangan Batu Bara,
(lebih dari)
Coal Reserved. (over)

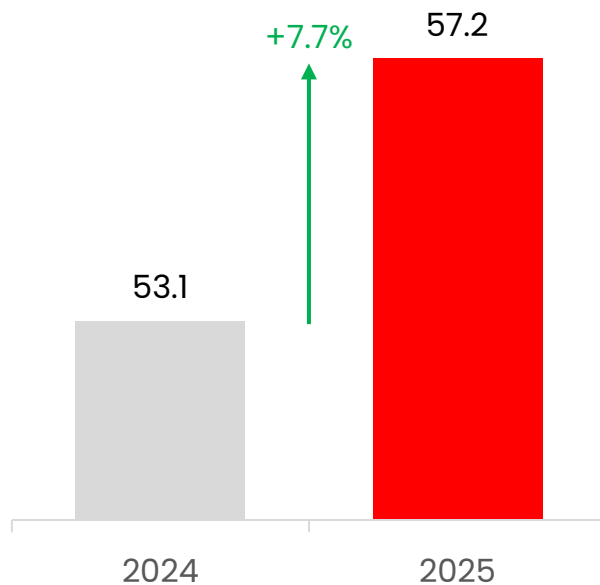


Nilai Kalori Rata-Rata
Average Calorific
Value

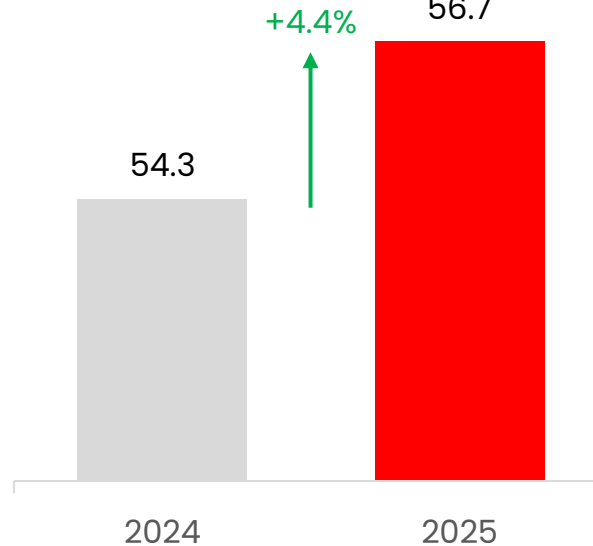
	%	Active Concessions	Ha	Million MT	Kcal/kg (arb)
 golden energy mines	51.0	5	66,204	844.4	3,000 – 6,600
 DSSE energy & mining	99.9	3	98,297	277.8	3,300 – 3,580

Operational Performance

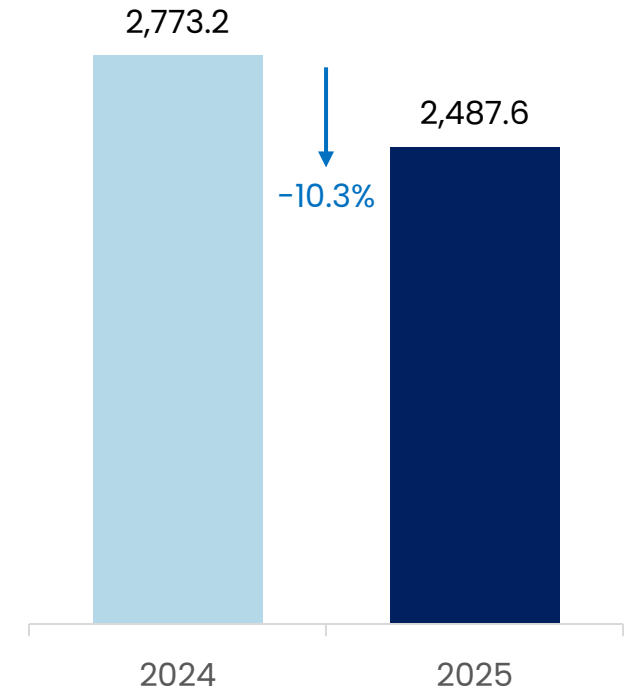
Production Volume
(million MT)



Sales Volume
(million MT)



Revenues
(million USD)

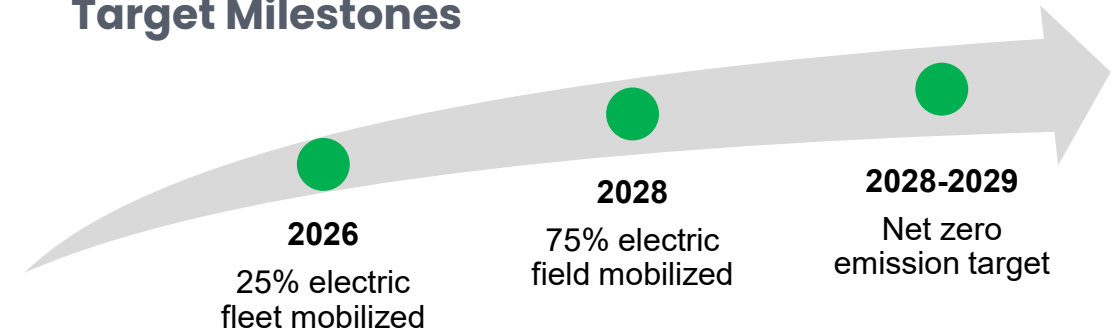


Throughout 2025, Indonesia's coal market experienced meaningful pricing normalization, reflected in the company's 10.3% decrease of coal revenue. Despite headwinds, the Company maintained resilient operational fundamentals with combined group coal production and sales of 57.2 million tonnes and 56.7 million tonnes.

Electrification in PT Borneo Indobara (BIB) – GEMS



Target Milestones



Strategic partnership with PLN

Increase in power capacity from 40 MVA to **200–240 MVA by 2028** to power its electric & hybrid units

Continuous Operational Innovations

- Pioneer to implement **systematic and integrated weather modification operations**
- Implemented **Weigh-in-Motion (WIM)** technology) trucks to increase productivity

Proven Use Case

Partner contractor, PT Anugrah Energi Kalimantan has already **electrified ~20% of its fleet**



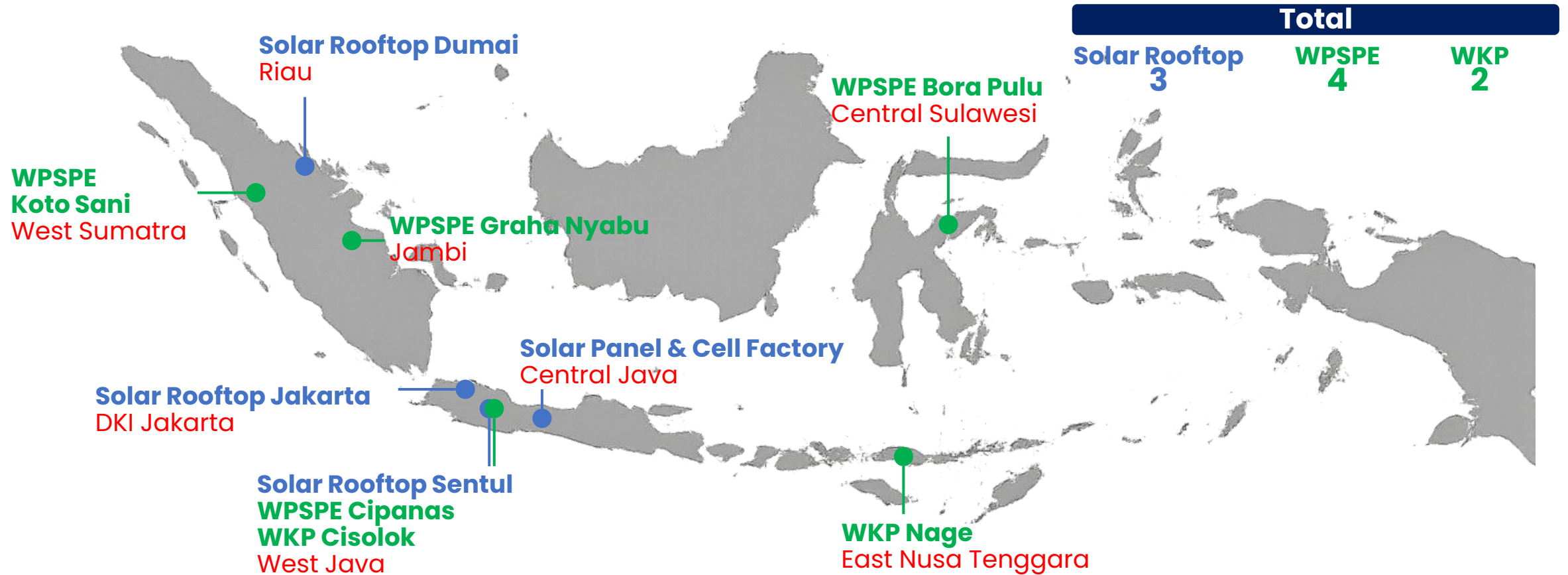
About

On February 9, 2026, BIB officially launched its **Electrification & Green Mining program**. As of May 2026, **176 electric & hybrid units** has been used to pioneer **largest mining electrification project in Indonesia**.



NEW AND RENEWABLE ENERGY

Locations of Solar Energy Project & Geothermal Projects



NRE – Solar PV

Solar PV Developer

The Company, through PT Daya Mas Agra Sejahtera (“**DMAS**”), established a solar panel development business under the Dian Solar brand. Until 2025, DMAS has realized several rooftop solar projects under Dian Solar brand, including in Marunda, Sentul, and Riau.



Solar PV Manufacture

In June 2025, the Company, through PT Daya Sukses Makmur Selaras, inaugurated an integrated solar cell and module manufacturing facility with a capacity of 1 GW per year in the Kendal Industrial Park, Central Java.



NRE – Geothermal



In October 2025, the Company, through a strategic partnership between PT DSSR Daya Mas Sakti and PT FirstGen Geothermal Indonesia – a subsidiary of First Gen Corporation, the largest renewable energy producer in the Philippines – expanded its geothermal resource portfolio with an initial potential capacity of 440 megawatts, spread across 6 (six) strategic areas located in West Java, East Nusa Tenggara, Jambi, West Sumatra, and Central Sulawesi.

Metro Data Center (Under Construction)



DIGITAL INFRASTRUCTURE AND TECHNOLOGY

Digital Infrastructure & Technology's Service Areas

■ Service Areas

● % of Effective Ownership



 **MorəRepublic** 99.9

PT Eka Mas Republik

 **162 Cities & Regencies**

 99.9

PT SMPlus Digital Investama

 **24 Cities**

Digital Infrastructure & Technology

FTTH & Backbone



In December 2025, PT Eka Mas Republik and PT Mora Telematika Indonesia Tbk (MORA) reached an agreement to merge, becoming PT Ekamas Mora Republik Tbk.

The merger has been legally effective on 22 April 2026, with the Company's effective ownership of 50.5%. The merger combines MORA's extensive fiber optic backbone infrastructure with MyRepublic's robust FTTH capabilities, creating a powerhouse in the telecom industry.

Data Center



In July 2025, the Company, through its subsidiary, entered into a strategic partnership with KIRA SG One Pte. Ltd. — part of Korea Investment Real Asset Management Co., Ltd. — to jointly develop international-standard data center services business with the application of advanced technologies such as AI and large-scale cloud computing in Indonesia.

Currently, the project is still construction phase with initial capacity of 18 MW and scalable to 60 MW. The project is expected to run in the second half of 2026.

+ Edge Data Center: SME01 - SME24



24 Cities **25** Data Centers **~10.0 MW** Installed Capacity **~12.0 MW** Under Development

Market Tailwinds

- **Cloud Migration:** Enterprises moving from on-premise to cloud and hybrid architectures
- **Data Sovereignty:** Government regulations requiring domestic data storage
- **5G Rollout:** Edge computing and low-latency applications driving distributed data center demand

+ Metro Data Center: SMX01



24%
Progress
per Dec 25

Secure, Reliable, Scalable, and Connected
AI-Ready DC Facility for High Density Deployment

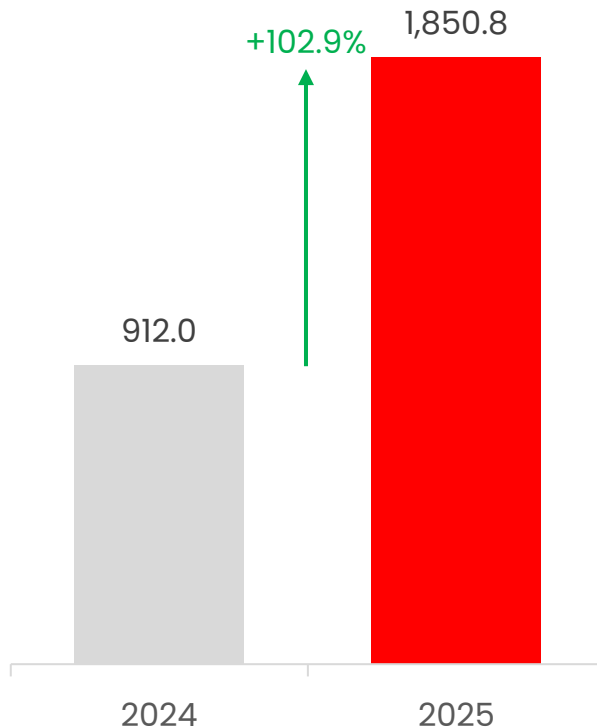
Q4-2026 Ready for Service **18.0 MW+** IT Load **Tier IV** Design Tiering

Competitive Advantages

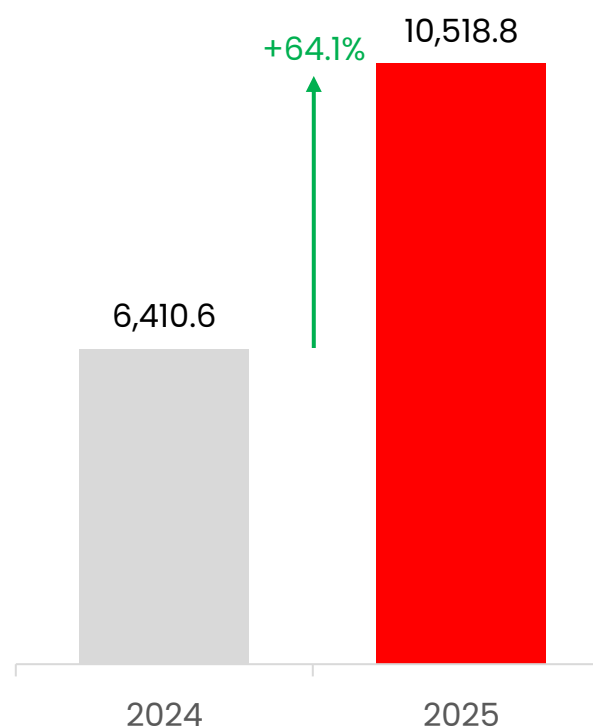
- **Prime Location:** Jakarta CBD site provides lowest latency to financial district
- **Scalable Power:** Abundant power capacity supporting AI/ML workload growth
- **Strong Partner:** LG CNS Co. Ltd has experienced in operating and developing over 600 MW of total data center capacity in Korea

Operational Performance

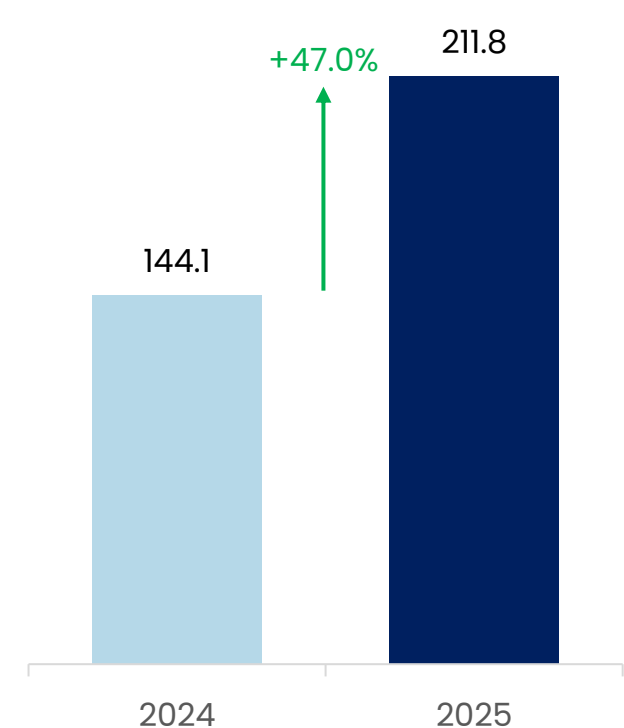
EMR's Subscribers*
(thousand people)



EMR's Homepass*
(thousand homepass)



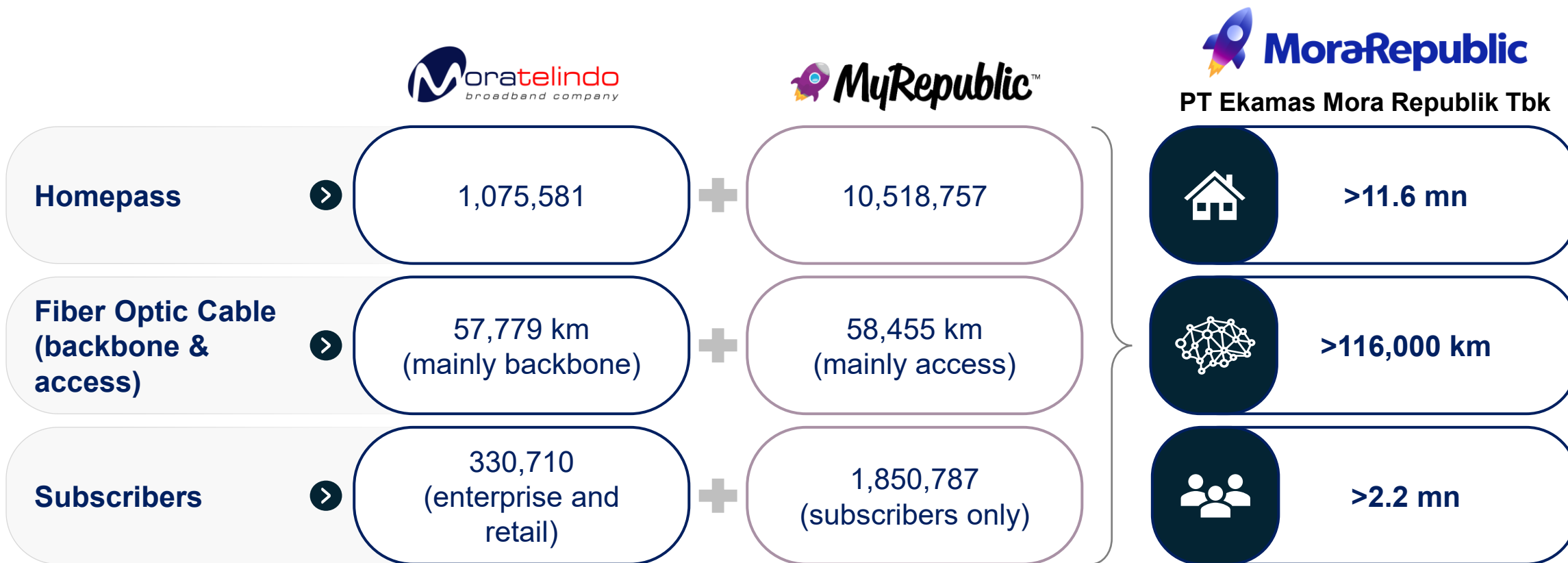
Revenues
(million USD)



In 2025, the digital infrastructure & technology segment grew 47.0% YoY from accelerated homepass network expansion (64.1% increase YoY) and the implementation of more aggressive marketing strategies to expand market reach (generating 1.85 subscribers) – becoming the 2nd largest player FTTH in Indonesia

*pre-merger

Post Merger Operational Snapshot




Expected Outcome

- ✓ More stable, faster services with wider coverage
- ✓ Financial synergies
- ✓ A stronger and more competitive entity
- ✓ Supports Indonesia's digital agenda in equitable distribution of digital infrastructure across the country




CHEMICALS


Office & Branch Locations

 **ROLIMEX (99.50% effective ownership)**



 **1** Kantor Pusat
Head Office - Jakarta

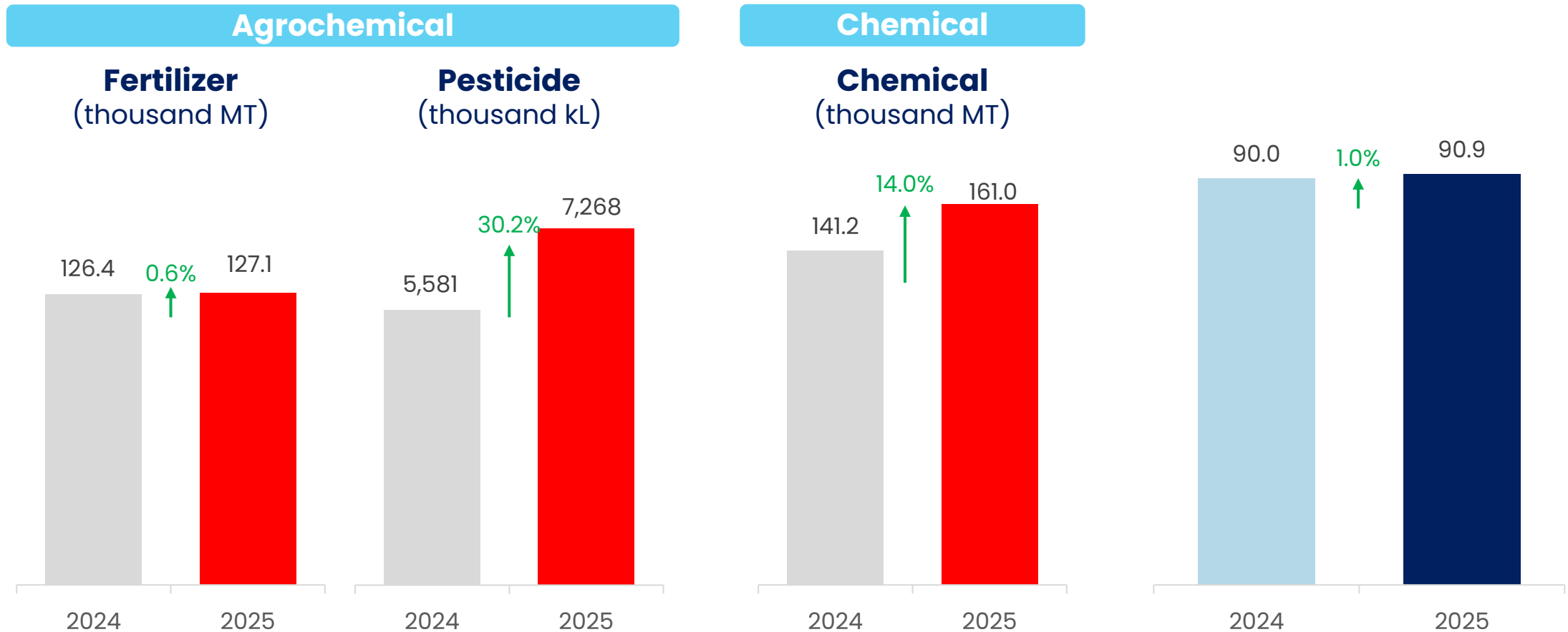
 **3** Fasilitas Manufaktur
Manufacturing Facilities

 **12** Pusat Distribusi
Distribution Centers

Operational Performance

Sales Volume

Revenues (million USD)



Positive sales volume in all product line reflects strong execution in distribution business, resulting in USD 90.9 million revenue in 2025.

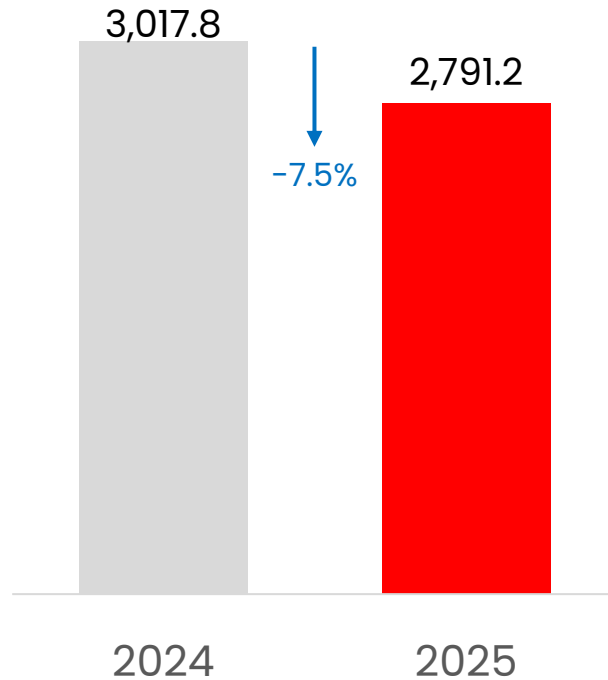
Agenda

- COMPANY OVERVIEW
- OPERATIONAL REVIEW 2025
- **FINANCIAL REVIEW 2025**
- BUSINESS STRATEGY
- CORPORATE GOVERNANCE

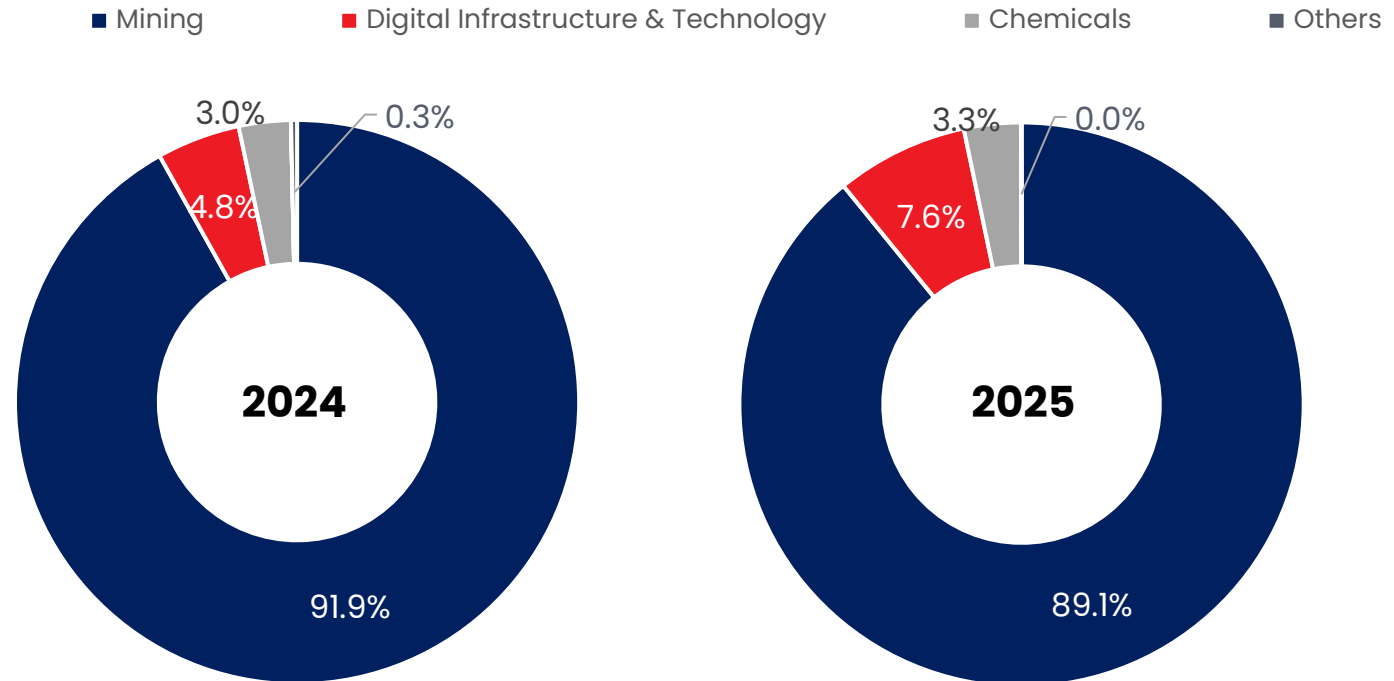


Revenues (million USD)

Consolidated



Revenues by Segments



The Company recorded a 7.5% decline in revenue driven by mining business revenue reduction due to a drop in benchmark coal prices. However, the Company demonstrated continued diversification momentum as the digital infrastructure & technology segment grew its contribution from 4.8% to 7.6% of total revenue in 2025.

Financial Highlights



	2024 (million USD)	2025 (million USD)	Changes (%)
Revenue	3,017.8	2,791.2	-7.5
Gross Profit	1,228.4	941.7	-23.3
Operating Profit	650.7	400.9	-38.4
Profit Before Tax	710.2	464.1	-34.7
Profit for the Period	542.8	361.2	-33.5

	2024 (million USD)	2025 (million USD)	Changes (%)
Current Assets	1,998.3	1,821.0	-8.9
Noncurrent Assets	1,696.8	2,594.0	52.9
Total Assets	3,695.1	4,415.0	19.5
Current Liabilities	857.4	826.1	-3.7
Noncurrent Liabilities	894.1	1,327.7	48.5
Total Liabilities	1,751.5	2,153.8	23.0
Total Equity	1,943.6	2,261.2	16.3

Financial Ratios

	2024	2025
Current Ratio	2.33x	2.20x
Liabilities to Equity Ratio	0.90x	0.95x
Liabilities to Assets Ratio	0.47x	0.49x
Return on Assets	14.7%	8.2%
Return on Equity	27.9%	16.0%
Gross Profit Margin	40.7%	33.7%

Agenda

- COMPANY OVERVIEW
- OPERATIONAL REVIEW 2025
- FINANCIAL REVIEW 2025
- **BUSINESS STRATEGY**
- CORPORATE GOVERNANCE



Business Strategy 2026



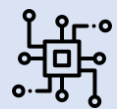
Mining

- Maintaining production stability
- Optimizing digitalization to enhance production efficiency (e.g., fleet electrification)
- Assessing opportunities for the development of downstream coal business lines



New & Renewable Energy

- Accelerating the exploration and development phases of geothermal projects



Digital Infrastructure & Technology

- Strengthening infrastructure, capacity, coverage, and service quality
- Strengthening the integrated digital ecosystem through merger realization, investments, and capital expenditure

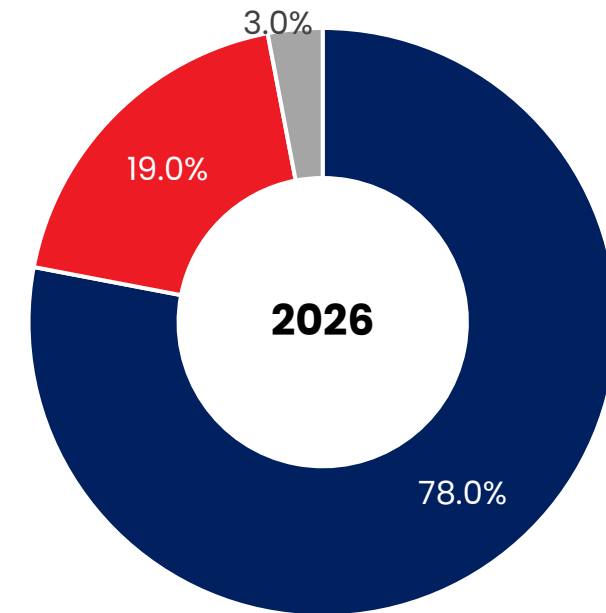


Chemicals

- Strengthening the portfolio of value-added products
- Expanding the customer base
- Implementing disciplined cost management, commodity price risk management, and prudent capital management

Target Revenues by Segments

■ Mining ■ Digital Infrastructure & Technology ■ Chemicals



Agenda

- COMPANY OVERVIEW
- OPERATIONAL REVIEW 2025
- FINANCIAL REVIEW 2025
- BUSINESS STRATEGY
- **CORPORATE GOVERNANCE**



Meetings in 2025

In 2025, the Company had conducted the following meetings:

1x Annual GMS	1x Extraordinary GMS	6x BOC Meetings	11x BOD Meetings
5x Joint Meetings	11x Audit Committee Meetings	6x Nomination & Remuneration Committee Meetings	6x Risk Management Committee Meetings

The Company has reported its financial and non-financial information transparently through the Company's website www.dssa.co.id and IDX's website www.idx.co.id

Corporate Actions in 2025

Shelf Registration Bonds and Sukuk Mudharabah

Security Name	Series	Nominal Value (million Rp)	Bonds Interest or Yield	Rating – Pefindo	Period	Maturity Date	Bonds Listing Date on IDX
Shelf Registration Bonds I Dian Swastatika Sentosa Phase IV Year 2025	-	256,700	6.875%	AA	5 years	9 October 2030	10 October 2025
Shelf Registration Sukuk I Dian Swastatika Sentosa Phase IV Year 2025	Series A	90,000	15.541% of distributed revenue with a profit-sharing indication equivalent to 6.250%/annum	AA sharia	3 years	9 October 2028	10 October 2025
Shelf Registration Sukuk I Dian Swastatika Sentosa Phase IV Year 2025	Series B	1,153,300	17.095% of distributed revenue with a profit-sharing indication equivalent to 6.875%/annum	AA sharia	5 years	9 October 2030	10 October 2025

Corporate Actions in 2025

Realization of the Appropriation of Funds of Bonds and Sukuk Mudharabah as of December 31, 2025

			(in million IDR)		
Shelf Registration Public Offering I*)			Proceed Funds **)	Realization of the Appropriation of Funds	Remaining Funds
Phase II Year 2024	Bonds	Rating idAA from Pefindo	1,044,348	770,299	274,049
	Sukuk Mudharabah	Rating idAA(sy) from Pefindo	443,824	443,824	-
Phase III Year 2024	Bonds	Rating idAA from Pefindo	2,522,092	1,902,377	619,715
	Sukuk Mudharabah	Rating idAA(sy) from Pefindo	952,010	708,894	243,116
Phase IV Year 2025	Bonds	Rating idAA from Pefindo	254,736	160,672	94,064
	Sukuk Mudharabah	Rating idAA(sy) from Pefindo	1,233,723	783,261	450,462
Total			6,450,733	4,769,327	1,681,406

Notes:

*) Plafond IDR 7 trillion

**) After deducted by issuance fee



Thank You